

Transport for NSW

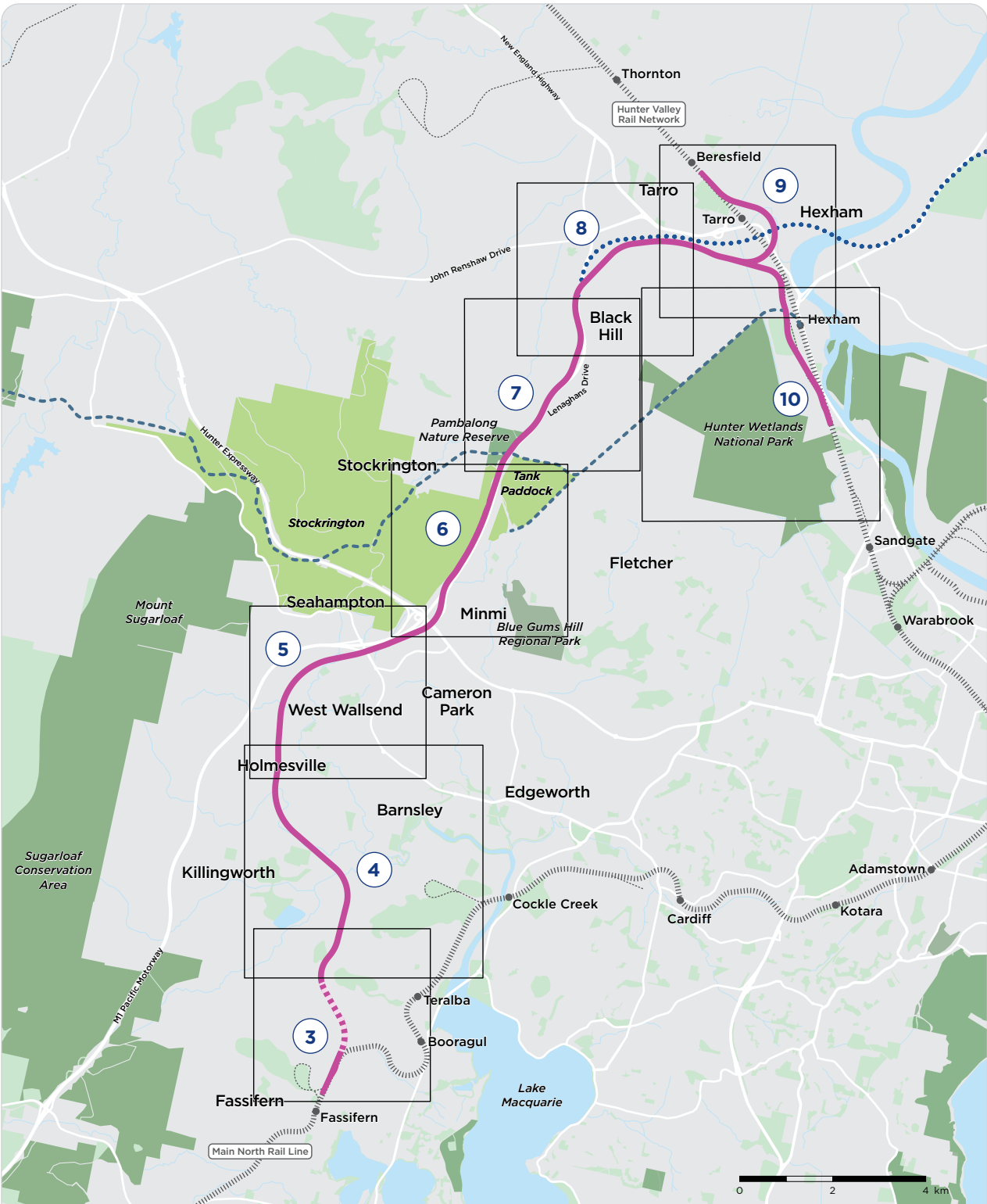
Maps for Consultation

Recommended Lower Hunter
Freight Corridor



Recommended Lower Hunter Freight Corridor

Overview map and page number index



KEY

- Short List Option**
- Pink Option
 - Tunnel
 - 3 Page numbers

- Environment**
- NSW National Park and Wildlife Service Estate
 - Lands acquired under National Parks and Wildlife Act
 - Other Parks

- Infrastructure**
- Existing Rail Network
 - Freight Sidings
 - Major Road Network
 - Proposed M1 Pacific Motorway extension to Raymond Terrace
 - Disused Richmond Vale Railway

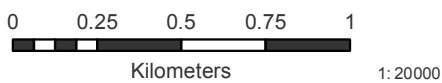
Note: Stylised representation, corridor widths may not be to scale

Recommended Lower Hunter Freight Corridor

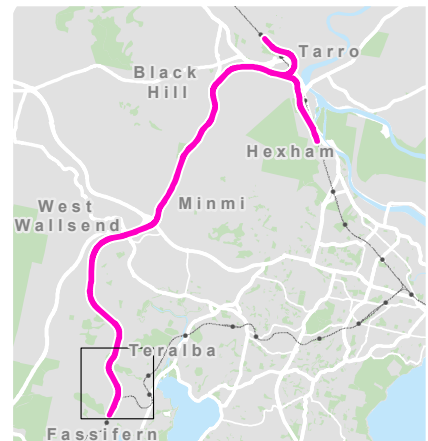
Fassifern, Wakefield and Teralba



- Recommended Lower Hunter Freight Corridor
- Impacted Property
- Impacted Property - tunnel section only
- Property Boundary
- Indicative Tunnel Portals
- Existing Rail Network



Aerial imagery (November 2020) © Nearmap




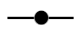


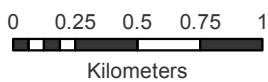
24/06/2021

Recommended Lower Hunter Freight Corridor

Wakefield, Teralba, Killingworth, Barnsley and Holmesville



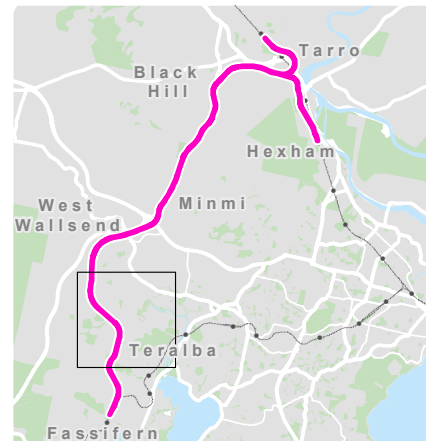
-  Recommended Lower Hunter Freight Corridor
-  Impacted Property
-  Property Boundary
-  Existing Rail Network



1:27000



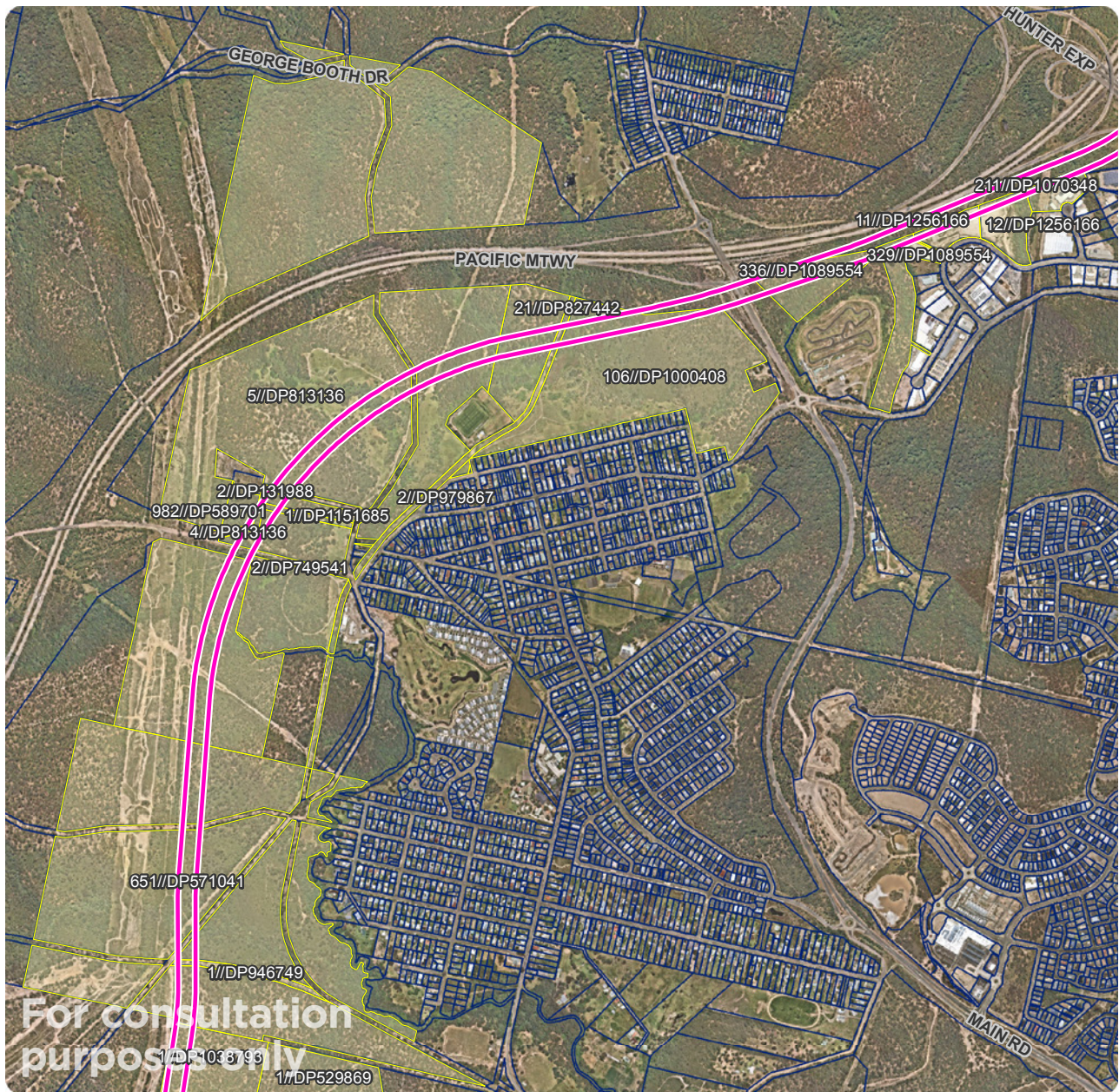
Aerial imagery (November 2020) © Nearmap



24/06/2021

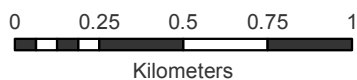
Recommended Lower Hunter Freight Corridor

Holmesville, West Wallsend, Seahampton and Cameron Park



For consultation purposes only

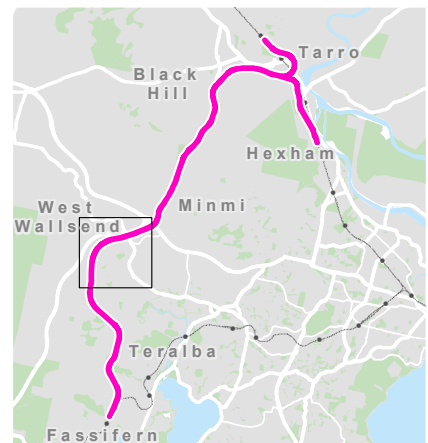
- Recommended Lower Hunter Freight Corridor
- Impacted Property
- Property Boundary



1: 20000



Aerial imagery (November 2020) © Nearmap



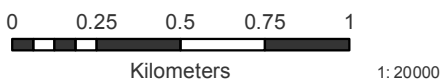
24/06/2021

Recommended Lower Hunter Freight Corridor

Cameron Park, Stockrington and Minmi



- Recommended Lower Hunter Freight Corridor
- Impacted Property
- Property Boundary



Aerial imagery (November 2020) © Nearmap



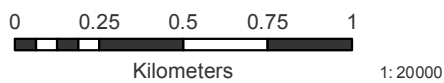
24/06/2021

Recommended Lower Hunter Freight Corridor

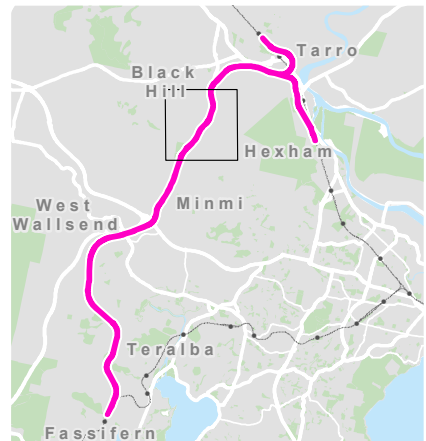
Minmi, Lenaghan and Black Hill



- Recommended Lower Hunter Freight Corridor
- Impacted Property
- Property Boundary



Aerial imagery (November 2020, January 2021) © Nearmap



24/06/2021

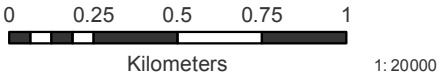
Recommended Lower Hunter Freight Corridor

Black Hill

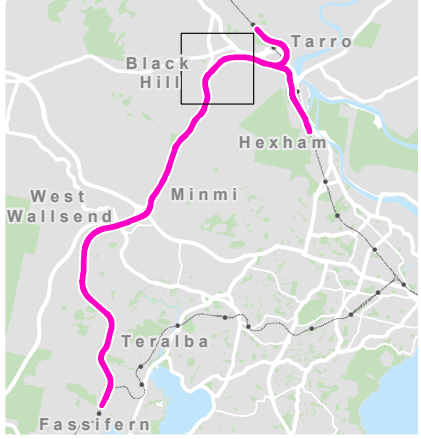


For consultation purposes only

- Recommended Lower Hunter Freight Corridor
- Impacted Property
- Property Boundary



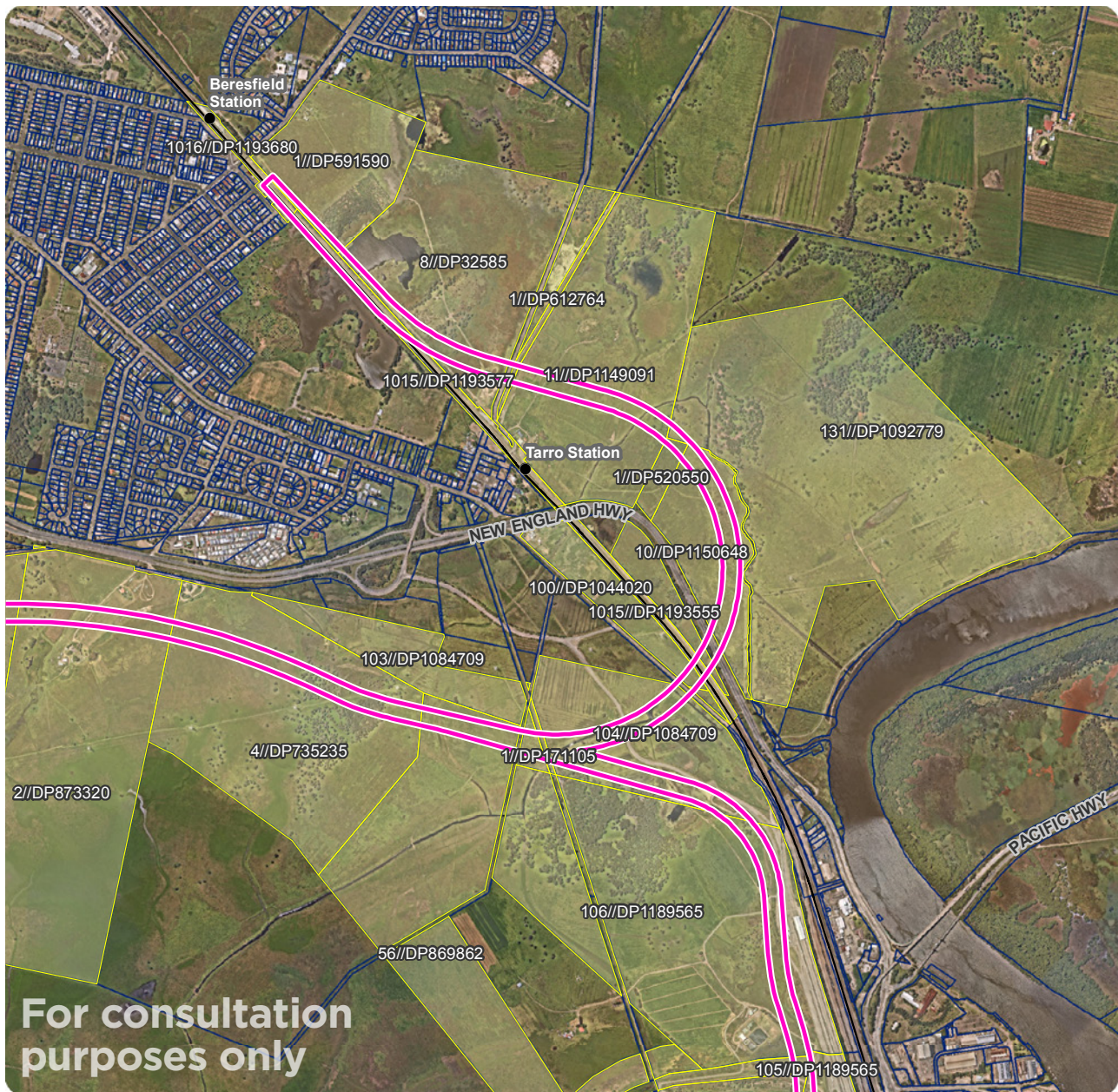
Aerial imagery (January 2021) © Nearmap



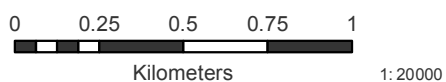
24/06/2021

Recommended Lower Hunter Freight Corridor

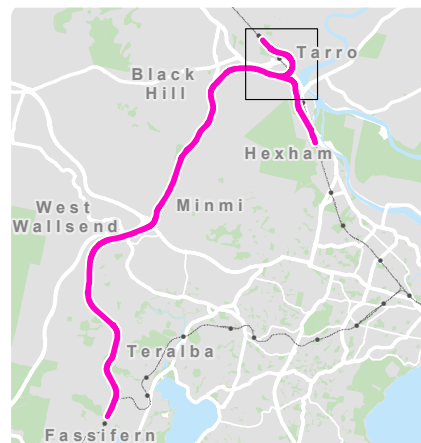
Black Hill, Hexham, Tarro, Beresfield and Woodberry



- Recommended Lower Hunter Freight Corridor
- Impacted Property
- Property Boundary
- Existing Rail Network



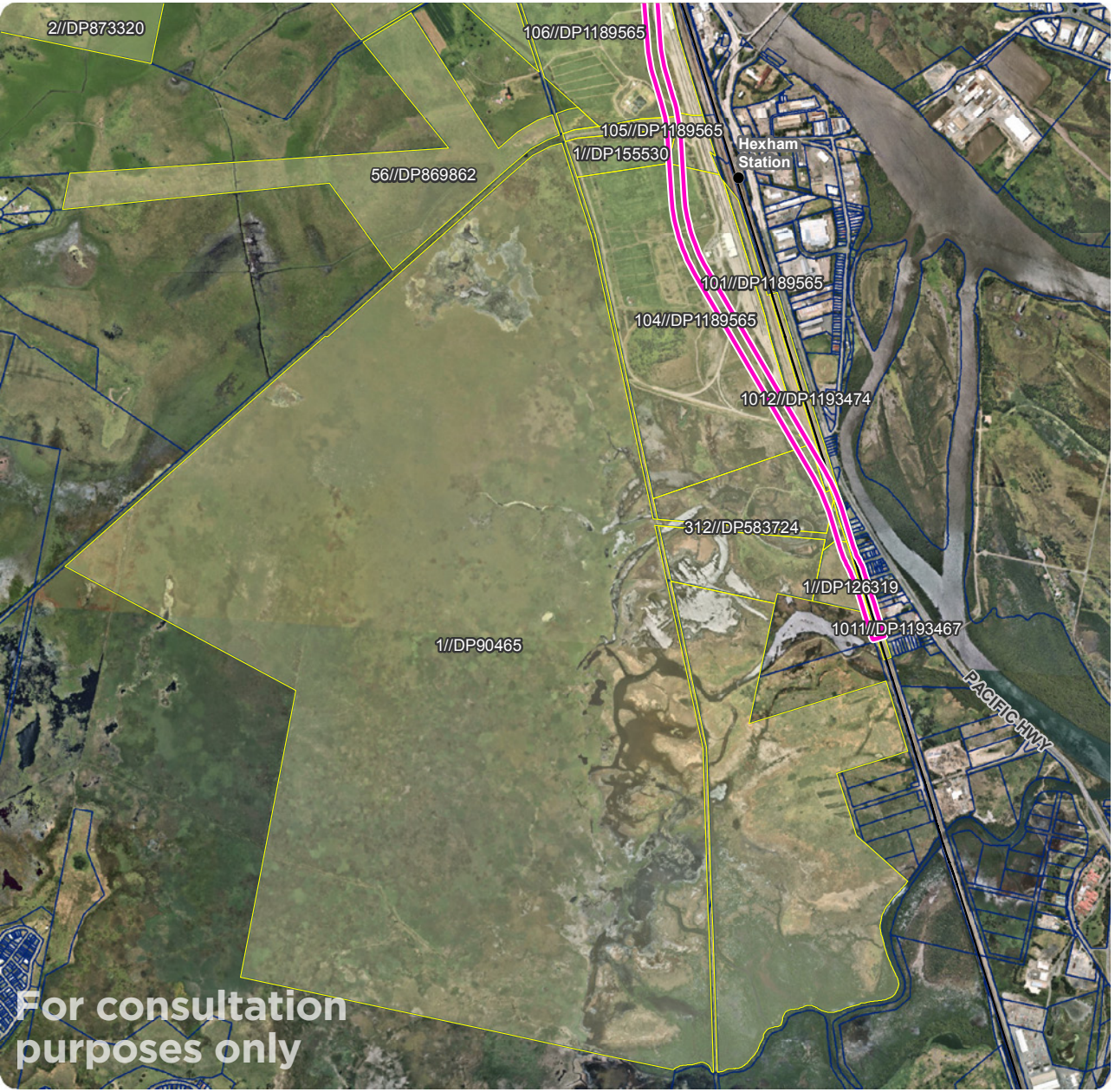
Aerial imagery (January 2021) © Nearmap



24/06/2021

Recommended Lower Hunter Freight Corridor

Black Hill and Hexham

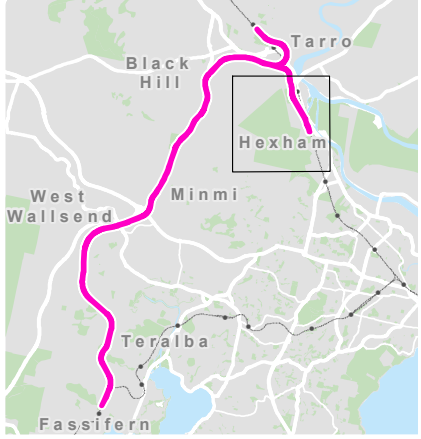


For consultation purposes only

- Recommended Lower Hunter Freight Corridor
- Impacted Property
- Property Boundary
- Existing Rail Network



Aerial imagery (November 2020, January 2021) © Nearmap



24/06/2021



transport.nsw.gov.au

Disclaimer

While all care is taken in producing this work, no responsibility is taken or warranty made with respect to the accuracy of any information, data or representation. The authors (including copyright owners) expressly disclaim all liability in respect of anything done or omitted to be done and the consequences upon reliance of the contents of this information.

© Transport for New South Wales

Users are welcome to copy, reproduce and distribute the information contained in this report for non-commercial purposes only, provided acknowledgement is given to Transport for NSW as the source. Unless otherwise stated all images are the property of Transport for NSW however any third party use of photography will require prior written permission.